

The Advance is our best-selling model, with over 500 size, décor and frame combinations in stock. It features dual, sturdy motors with an even load capacity of 120kg.

This desk also features a quiet European electronic system by LogicData®, which has an efficient standby power of less than 0.3w, and allows the desk to raise and lower at a speed of 40mm per second. Highly customisable with over 20 compatible accessory and cable management options.

## FEATURES



Height Range: 625 - 1285mm



5 Year Guarantee



Speed: 40mm Per Second



Next Day Delivery



Load Capacity: 120kg  
(Heavy Duty Upgrade 160kg)



Dual Motor Desk

## FRAME OPTIONS



Black  
RAL 9005



Anthracite  
Metallic



Silver  
RAL 9006



White  
RAL 9016

## SUSTAINABILITY



# STOCK TOP DÉCORS

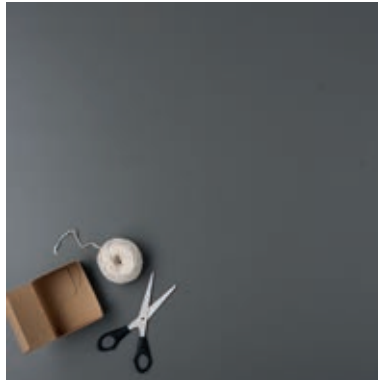
## BLACK

EGGER U999



## GRAPHITE

KRONOSPAN 0162



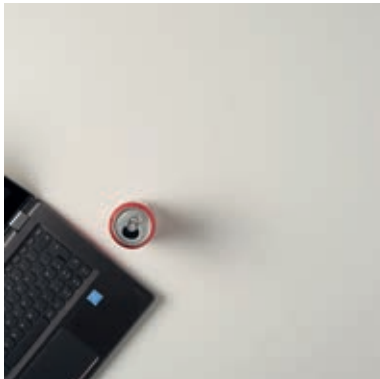
## GREY

KRONOSPAN U112



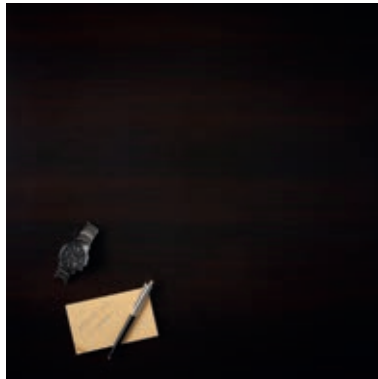
## WHITE

KRONOSPAN K101



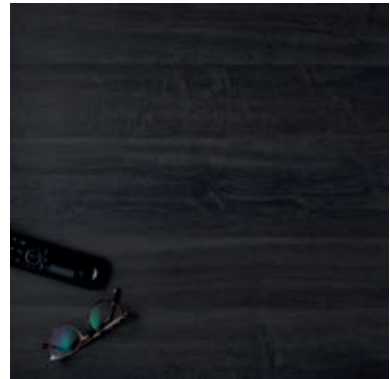
## WENGE

EGGER H1137



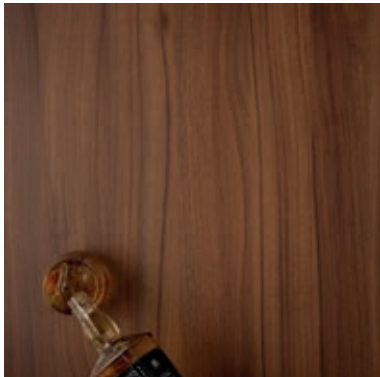
## ANTHRACITE SHERMAN OAK

EGGER H1346



## NATURAL DIJON WALNUT

EGGER H3734



## TIMBER

EGGER H1487



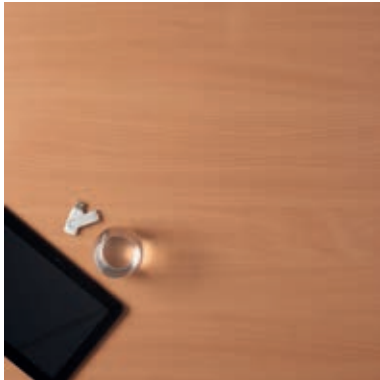
## GREY NEBRASKA OAK

EGGER H3332



## BEECH

KRONOSPAN D381



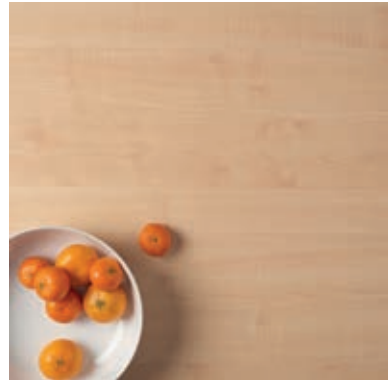
## OAK

EGGER H1334



## MAPLE

KRONOSPAN D375



## CASCINA PINE

EGGER H1401



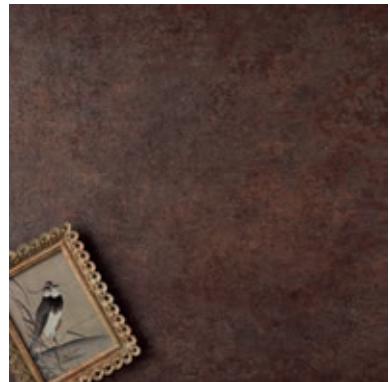
## CONCRETE

EGGER F186



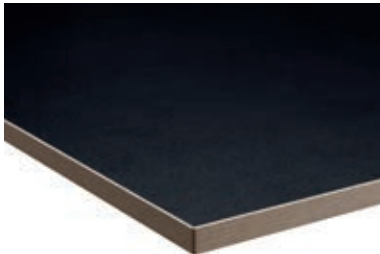
## FERRO BRONZE

EGGER F302



## BLACK PLY EDGE

KRONOSPAN U999



## GRAPHITE PLY EDGE

KRONOSPAN 0162



## WHITE PLY EDGE

KRONOSPAN K101

