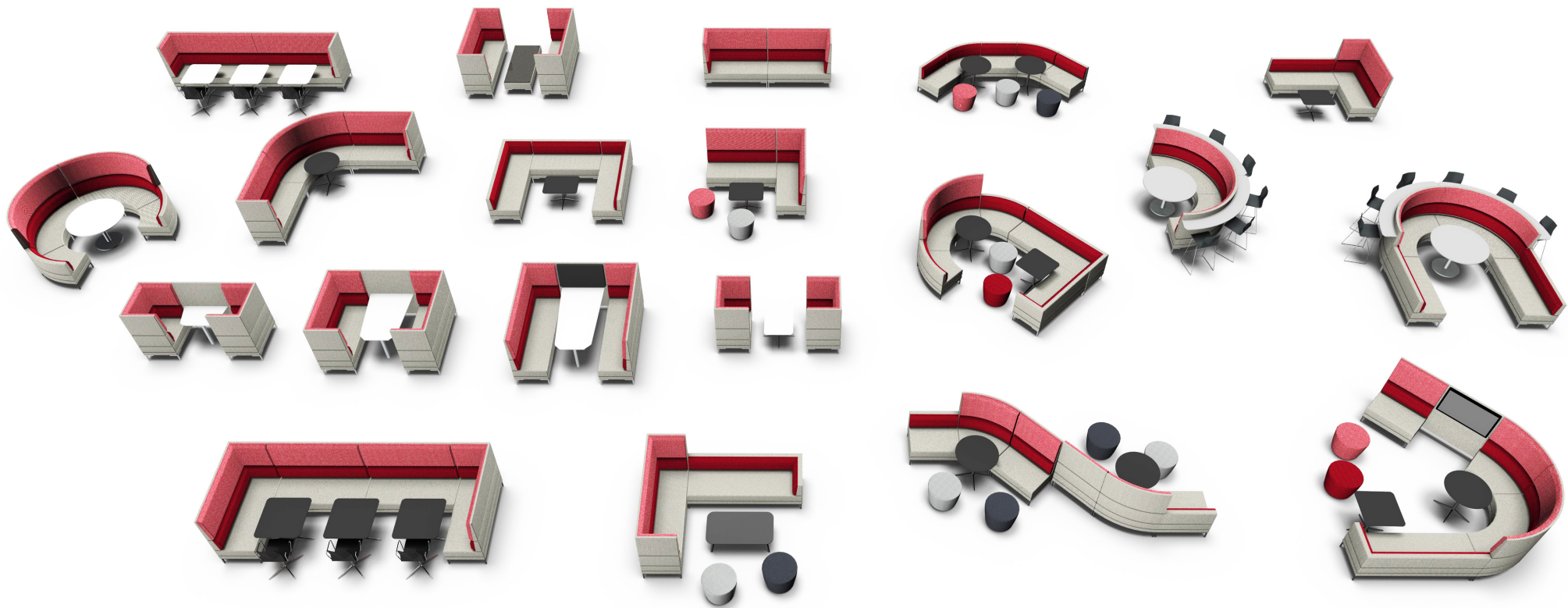




HenRay


Designed by Henry Gurney




Features

- Designed by Henry Gurney
- 30 straight and curved modular high and low back units
- Fully webbed seat
- HenRay Booth options for Two, Four and Six people
- Modular units can create large landscapes or small informal meeting areas
- Available in fabric and vinyl, with two-tone options
- Aluminium or white or black powder coated legs
- Power and audio visual options

- Square scatter cushions and bolsters available
- Two and three seater booth options
- Booth table units with leg and top options
- TV bracket and specific power and data options available
- Range includes complementary low back straight and curved options

 65kg
 HENRAYLB2
other weights on application

 Min 95% recyclable

 **Design
Guild Mark**
 Awarded by The Furniture Makers' Company



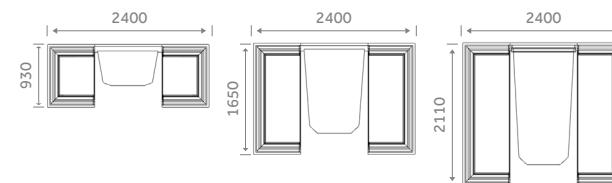
Inspiration

HenRay Booths

2, 4 and 6 person booths



Dimensions (mm)



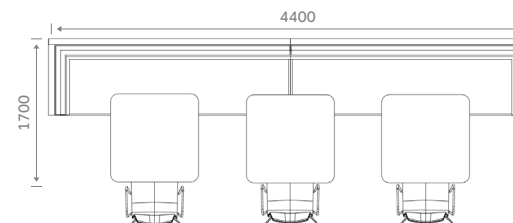
HenRay Dining

Banquette Style Seating



HenRay Bistro

Cafe style seating

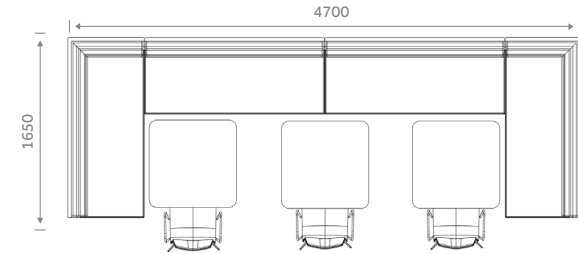


Layouts

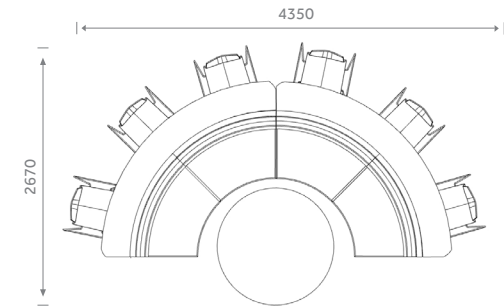
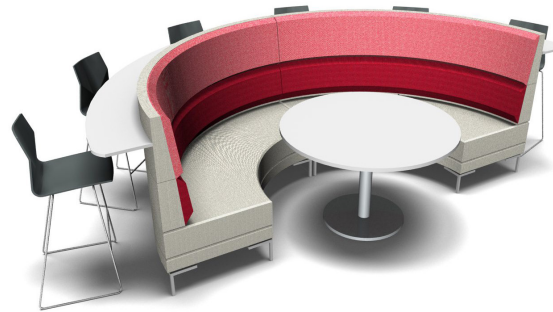
HenRay Bistro
Cafe style seating



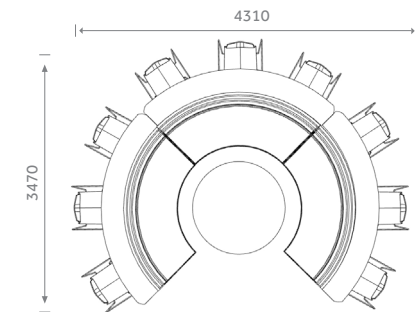
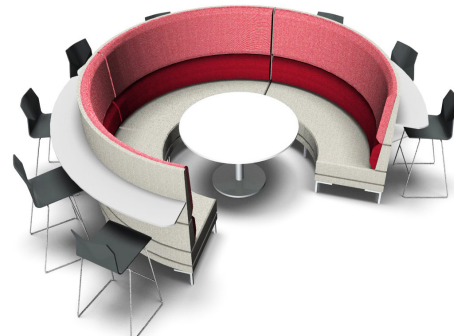
Dimensions (mm)



HenRay Media
HenRay Presentation



HenRay Meeting and Touchdown
Group collaboration with touchdown

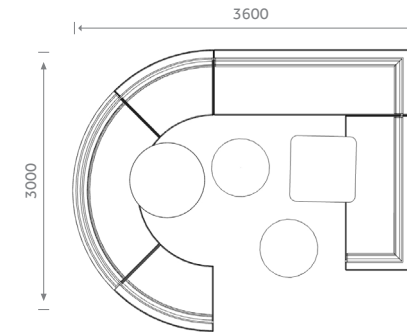


Layouts

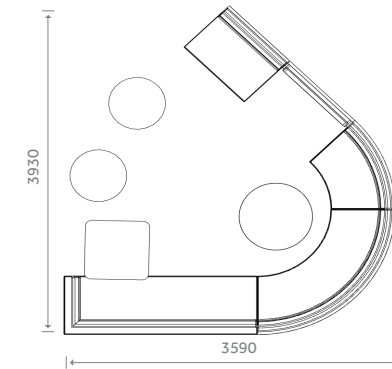
HenRay Collaborate
Brainstorm and discussion area



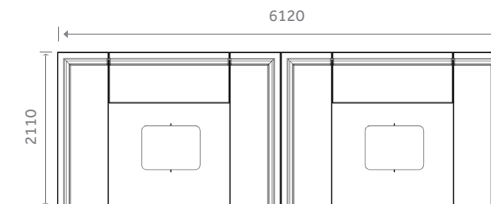
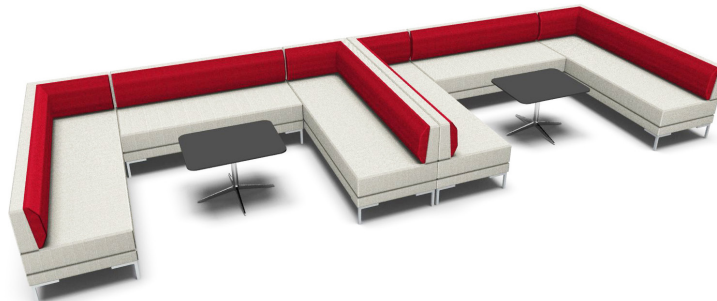
Dimensions (mm)



HenRay Collaborate & Present
Presentation layout including TV



HenRay Landscape
Communal seating area

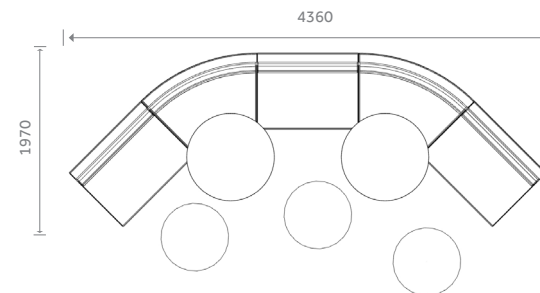


Layouts

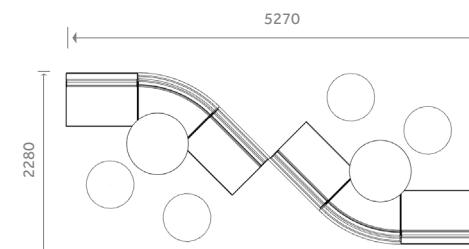
HenRay Landscape
Dynamic low back seating areas



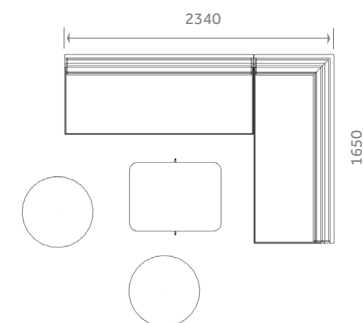
Dimensions (mm)



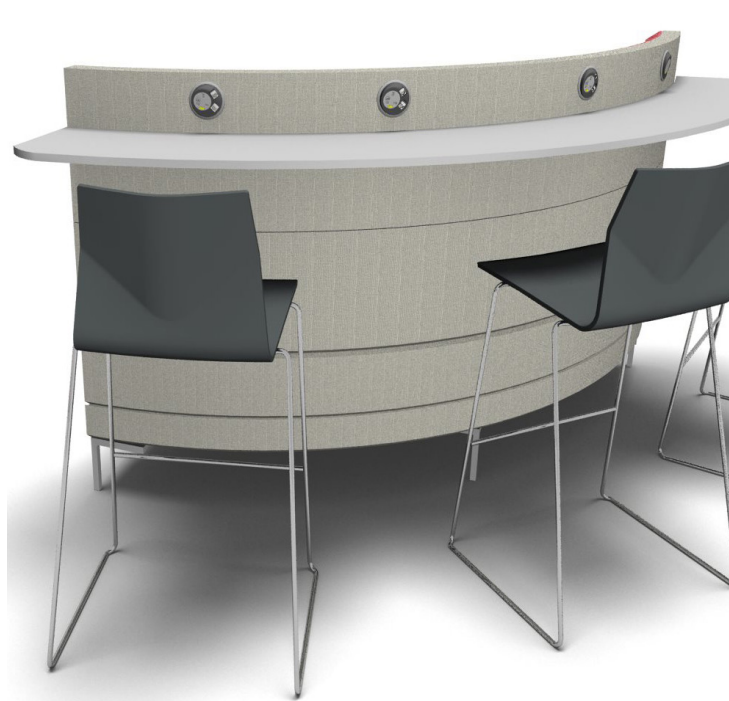
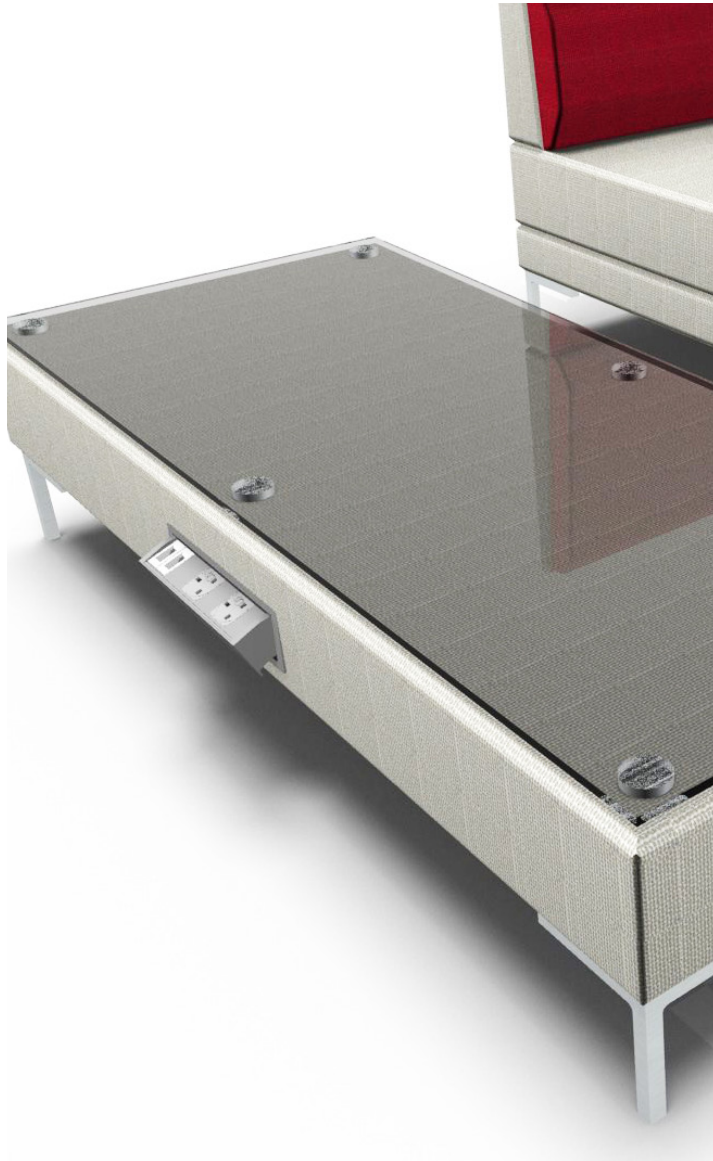
HenRay Landscape
Dynamic high back seating areas



HenRay Private
Private spaces to meet



Layouts



HenRay Technology