

The Duo is our contract winning back-to-back benching system. It offers high-performance dual motor workstations and ingenious flexible cable management options - with a fully supported 5 year guarantee on all components.

This desk is available from stock in over 300 frame colour, top size and décor options. With an extensive opportunity for screens, custom sizing and a weight capacity of 120kg per workstation (240kg per unit), the Duo is adaptable for any maximising the functionality of any commercial environment.

FEATURES



Height Range: 615 - 1275mm



5 Year Guarantee



Speed: 40mm Per Second



Next Day Delivery



Load Capacity: 120kg (x2)



Dual Motor Desk (x2)

FRAME OPTIONS



Black
RAL 9005



Silver
RAL 9006



White
RAL 9016

SUSTAINABILITY



STOCK TOP DÉCORS

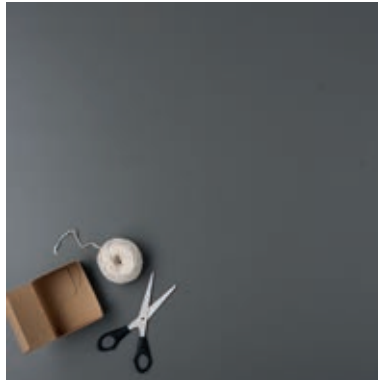
BLACK

EGGER U999



GRAPHITE

KRONOSPAN 0162



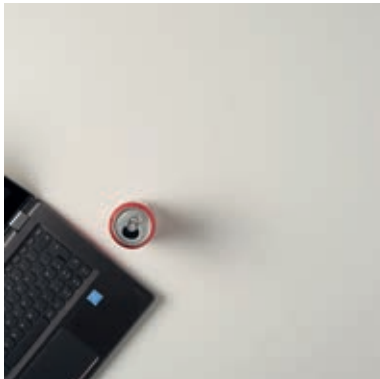
GREY

KRONOSPAN U112



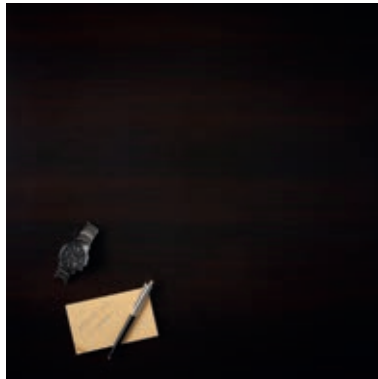
WHITE

KRONOSPAN K101



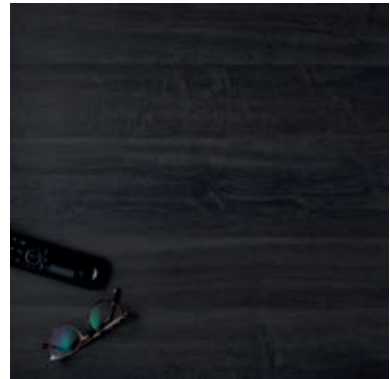
WENGE

EGGER H1137



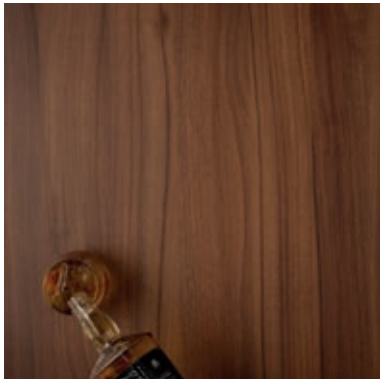
ANTHRACITE SHERMAN OAK

EGGER H1346



NATURAL DIJON WALNUT

EGGER H3734



TIMBER

EGGER H1487



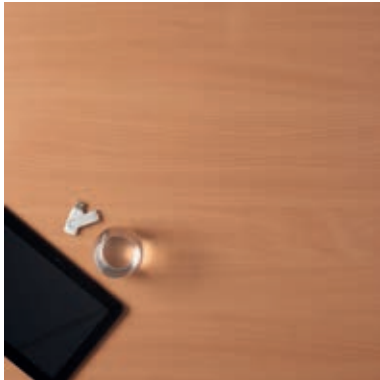
GREY NEBRASKA OAK

EGGER H3332



BEECH

KRONOSPAN D381



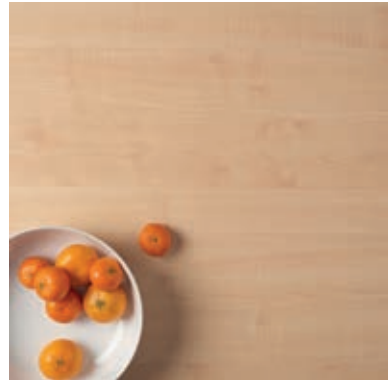
OAK

EGGER H1334



MAPLE

KRONOSPAN D375



CASCINA PINE

EGGER H1401



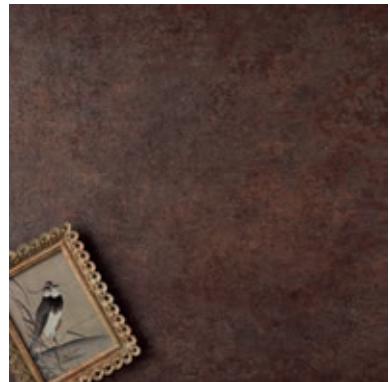
CONCRETE

EGGER F186



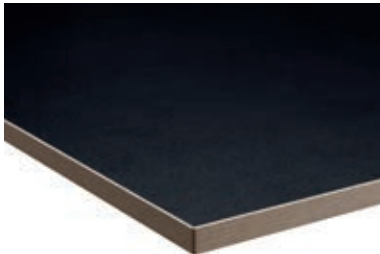
FERRO BRONZE

EGGER F302



BLACK PLY EDGE

KRONOSPAN U999



GRAPHITE PLY EDGE

KRONOSPAN 0162



WHITE PLY EDGE

KRONOSPAN K101

