

Coco

ONE CAST | TWO CHARACTERS



COCO

designed by Lydia Addison

ONE CAST | TWO CHARACTERS

An extravagant combination of fabrics makes Coco truly a signature piece.

The bold Coco collection of benches, sofas and armchairs creates a striking combination of contemporary and retro style on a solid beech frame. Distinctive in shape, comfortable, generous in size, robust yet elegant - this versatile collection builds exciting seating landscapes that are suitable for reception, lounge and hospitality environments. The accompanying table range makes the picture complete.





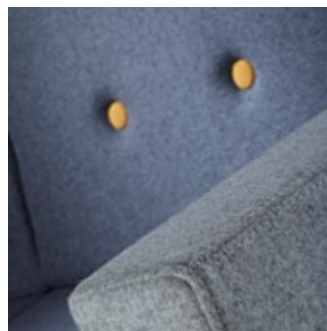
CONTEMPORARY

the distinctive shape, clear lines give Coco
its elegant and contemporary look



SUSTAINABLE

100% FSC approval using controlled sources
recycled environmentally friendly OSB carcass
recycled and recyclable foams



VARIABLE

variations of shapes and sizes
fabric combinations
beech frame stained to your specification





