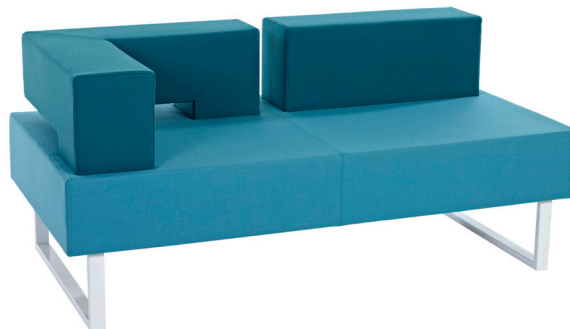


Chicago Modular

modular bench system

Chicago Modular uses the bold aesthetics of the Chicago sofa to form a range of configurable seating. The bench style system features two back details which allow variable combinations and offer comfort and back support. The benches are available as single and two seater. To introduce another level the range incorporates dining/working height benches and high stools and benches. Complementary tables are available in coffee, dining and poseur height.

With its versatility Chicago Modular strikes the right balance between working, dining and breakout to meet the requirements of the modern workplace or educational environment.



FEATURES AND OPTIONS

- Fully upholstered modular bench system
- Modular back rest, straight and unique floating corner detail
- Single and two seat benches
- Range incorporates a circular and square mobile stool
- Low and high benches
- Robust steel frame available in satin silver as standard, optional eco chrome or white finish
- Eco chrome: High gloss silver paint finish with the appearance of polished aluminium
- Complementary table range available
- ***For seat/back combinations, please see Configuration Guide Available on our website.***

<http://nomique.com/resources-downloads/>

FRAME FINISH



STANDARDS

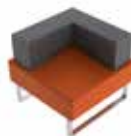
- [Designed to conform to BS EN 16139:2013](#)

WARRANTY

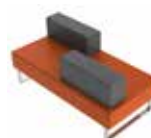
- 5 years

Chicago Modular

modular bench system



	description			
	single seat stool, satin frame	single seat bench, straight back, satin frame	single seat bench, corner back, left or right hand sitting, satin frame	double seat stool, satin frame
dimensions seat (mm)	CGM1-S	CGM1-SB-S	CGM1-CBR-S (right) CGM1-CBL-S (left)	CGM2-S
	height	420	420	420
	width	750	750	1500
	depth	750	500	750
	overall (mm)			
overall (mm)	height	420	676	420
	width	750	750	1500
	depth	750	750	750
options	replace -S with: eco chrome* -P white -WHT			
frame				



	description			
	double seat bench, single back, left or right hand sitting, satin frame	double seat bench, two straight backs, satin frame	double seat bench, two straight alternating backs, left or right hand sitting, satin frame	double seat bench, two corner backs, satin frame
dimensions seat (mm)	CGM2-SBR-S (right) CGM2-SBL-S (left)	CGM2-2SB-S	CGM2-2SBR-S (right) CGM2-2SBL-S (left)	CGM2-2CB-S
	height	420	420	420
	width	1500	1500	1000
	depth	(500) 750	500	500
	overall (mm)			
overall (mm)	height	676	676	676
	width	1500	1500	1500
	depth	750	750	750
options	replace -S with: eco chrome* -P white -WHT			
frame				

Chicago Modular

modular bench system



description	double seat bench, two alternating corner back, right or left hand sitting, satin frame	double seat bench, corner back, left or right hand sitting, satin frame	double seat bench, straight and corner back, left or right hand sitting, satin frame	double seat bench, double straight back, satin frame
product code	CGM2-2CBR-S (right) CGM2-2CBL-S (left)	CGM2-CBR-S (right) CGM2-CBL-S (left)	CGM2-SBR-CB-S (right) CGM2-SBL-CB-S (left)	CGM2-DSB-S
dimensions seat (mm)				
height	420	420	420	420
width	1000	1250	1250	1500
depth	500	(500) 750	500	500
overall (mm)				
height	676	676	676	676
width	1500	1500	1500	1500
depth	750	750	750	750
options	replace -S with: eco chrome* -P £30 white -WHT £26			
frame				



description	mobile stool, square, castors	mobile stool, circular, castors	single high stool, satin frame	two seat high stool, satin frame
product code	CGMS-SQ-CAS	CGMS-CIR-CAS	CGMB-H1-S	CGMB-H2-S
dimensions seat (mm)				
height	480	480	770	770
width	450	ø 450	450	1350
depth	450		450	450
overall (mm)				
height			770	770
width			450	1350
depth			450	450
options	replace -S with: eco chrome* -P white -WHT			
frame				

Chicago Modular

modular bench system



description two seat dining height bench,
satin frame

product code CGMB-DH2-S

dimensions seat (mm)

height	480
width	1350
depth	450

overall (mm)

height	480
width	1350
depth	450

options replace -S with:
frame eco chrome* -P
white -WHT

