

Product information

Aquarius is a tried and tested, versatile crepe weave fabric that is suitable for task chairs and soft seating. It's made from 100% natural wool, which is not only rapidly renewable but also fully bio-degradeable. The colour palette offers a great balance of subdued organic shades and confident brights.

Contact	
UK Head Office:	+44 (0)1924 490491
Germany:	+49 7031 60 84 30
Scandinavia:	+45 32 55 20 01
France/Benelux:	+32 56 227 266
USA:	+1 317 484 0305
China:	+ 86 (0) 21 6133 1812

www.camirafabrics.com



Technical information

UK

Composition

100% Virgin Wool.
Non metallic dyestuffs

Environmental

Rapidly renewable and compostable

Width

140cm minimum

Weight

370g/m² ±5% (520g/lin.m ±5%)

Abrasion Resistance

5 year guarantee / 50,000 Martindale cycles (full details available)

Flammability

BS EN 1021 - 1:2014 (cigarette)
BS EN 1021 - 2:2014 (match)
BS 7176:2007 Low Hazard

Optional - Please specify when ordering:

BS 5852:2006 Section 4 Ignition Source 5
BS 7176:2007 Medium Hazard

Note: Flammability performance is dependent on foam used.

Light Fastness

5 (ISO 105 - B02:2013)

Fastness to Rubbing

Wet: 4, Dry: 4 (ISO 105 - X12:2002)

Cleaning

Vacuum regularly. Professionally dry clean or wipe clean with a damp cloth.

Please note that seam performance is dependent on seam construction and needle and thread type. We recommend that appropriate sewing advice be taken.

Note: Batch to batch variations in shade may occur within commercial tolerances. We reserve the right to alter technical specifications without notice. The Unregistered Design Rights and the Copyright in all designs are the exclusive property of Camira Fabrics Limited.

D

Zusammensetzung

100% Schurwolle. Nicht schwermetallhaltige Farbstoffe

Umweltfreundlich

Schnell erneuerbar und kompostierbar

Breite

140cm nutzbare Breite

Gewicht

370g/m² ±5% (520g/lfd.M ±5%)

Scheuerfestigkeit

5 Jahre Garantie / 50,000 Martindale Scheuertouren (Details auf Anfrage)

Feuersicherung

BS EN 1021 - 1:2014 (Zigarettestest)
BS EN 1021 - 2:2014 (Streichholztest)
BS 7176:2007 Low Hazard

Bitte bei Auftragserteilung angeben:

BS 5852:2006 Section 4 Ignition Source 5
BS 7176:2007 Medium Hazard

Bemerkung: Schwerentflammbarkeit hängt von verwendetem Schaum ab.

Lichtechtheit

5 (ISO 105 - B02:2013)

Reibechtheit

Nass: 4, Trocken: 4 (ISO 105 - X12:2002)

Reinigung

Regelmässig absaugen. Professionelle Trockenreinigung. Alternativ dazu mit einem feuchten Tuch abwischen.

Eine optimale Nahtausreissfestigkeit hängt von der Nahtfahne, der verwendeten Nadel und dem Näh-Garn ab. Wir empfehlen daher Nähversuche durchzuführen.

Wichtig: Handelsübliche Farbabweichungen können auftreten und berechnen nicht zur Reklamation. Wir behalten uns die Änderung technischer Spezifikationen vor. Die registrierten und nicht registrierten Urheberrechte der Dessinierungen sind ausschliessliches Eigentum der Camira Fabrics Limited.

F

Composition

100% Laine Vierge.
Teintures non métalliques

Écologique

Rapidement renouvelable et compostable.

Largeur

140cm minimum

Poids

370g/m² ±5% (520g/m.l ±5%)

Résistance à l'abrasion

Garantie de 5 ans / 50,000 Martindale tours (renseignements complémentaires disponibles)

Flammabilité

BS EN 1021 - 1:2014 (cigarette)
BS EN 1021 - 2:2014 (allumette)
BS 7176:2007 Low Hazard

Notez - Réaction au feu dépend de la mousse utilisée:

BS 5852:2006 Section 4 Ignition Source 5
BS 7176:2007 Medium Hazard

Notez: Réaction au feu dépend de la mousse utilisée.

Solidité à la lumière

5 (ISO 105 - B02:2013)

Solidité au Frottement

Mouillé: 4, Sec: 4 (ISO 105 - X12:2002)

Nettoyage

Aspirer régulièrement. Nettoyage à sec professionnel. Autrement, essayer avec un tissu humide.

Veuillez noter que la performance du joint dépend de sa construction ainsi que de l'aiguille et du type de fil utilisés.

Remarque: une variation de couleurs peut provenir (commerciallement tolérable). Nous réservons le droit de changer les spécifications techniques sans préavis. Les Droits de Conception non-enregistrés et les droits d'auteur de tous les motifs sont la propriété exclusives de Camira Fabrics Limited.

ES

Composición

100% Lana Virgen.
Tintes no metálicos

Ambiental

Rapidamente renovable y compostable

Ancho

140cm mínimo

Peso

370g/m² ±5% (520g/lin.m ±5%)

Resistencia a la abrasión

Garantía de uso 5 años / 50,000 Martindale ciclos (más información disponible bajo consulta)

Inflamabilidad

BS EN 1021 - 1:2014 (cigarillo)
BS EN 1021 - 2:2014 (cerilla)
BS 7176:2007 Low Hazard

Con tratamiento adicional de foamizado por favor especificar cuando se requiere en el pedido:

BS 5852:2006 Section 4 Ignition Source 5
BS 7176:2007 Medium Hazard

Condiciones ignífugas dependientes del tipo de foam utilizado

Solidez a la luz

5 (ISO 105 - B02:2013)

Solidez al rozamiento

Húmedo: 4, Seco: 4 (ISO 105 - X12:2002)

Limpieza

Limpiar con aspirador con regularidad. Limpiar en seco, o bien lavar con un paño húmedo.

Tenga en cuenta que el rendimiento de la costura depende de la construcción de la costura, además de la aguja y del tipo de rosca. Le recomendamos que se aconsejen para coser la costura.

Nota: las variaciones de lote a lote en la sombra se puede producir dentro de tolerancias comerciales. Nos reservamos el derecho a efectuar modificaciones técnicas sin previo aviso. Los derechos sobre los diseños no registrados y los derechos de autor en todos los diseños son propiedad exclusiva de Camira Fabrics Limited.

camira

style with substance

www.camirafabrics.com

Aquarius



Task seating



Soft seating



Cigarette & Match



Environmental



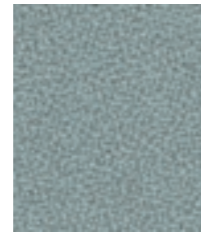
Year guarantee



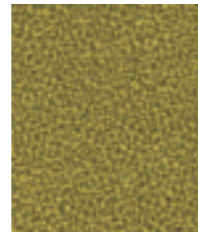
Aristotle
JA416



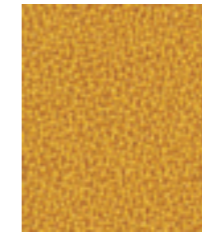
Frozen
JA510



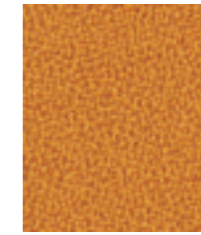
Ceramic
JA512



Courgette
JA201



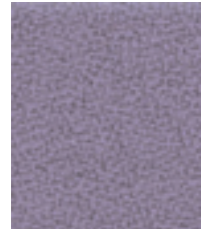
Sunglow
JA506



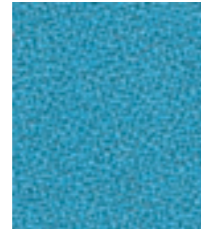
Zippy
JA426



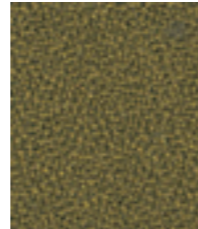
Ceres
JA409



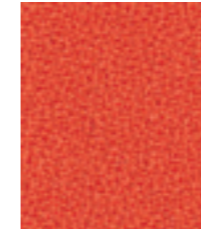
Fleece
JA509



Iceberg
JA195



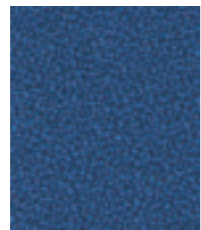
Pesto
JA169



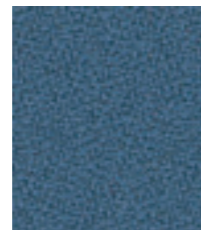
Circus
JA428



Amber
JA068



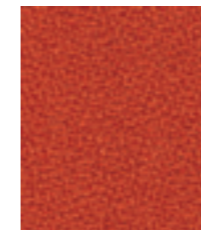
Bluebell
JA015



Porcelain
JA024



Tombola
JA442



Tambourine
JA183



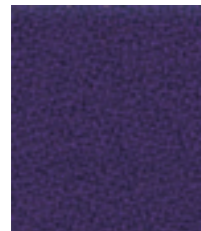
Jezebel
JA027



Stable
JA507



Mushroom
JA125



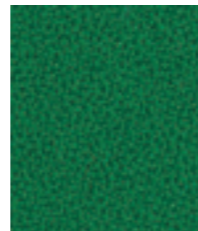
Purple
JA157



Smurf
JA159



Manta
JA194



Chomsky
JA443



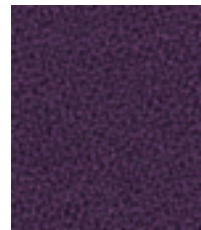
Cherry
JA419



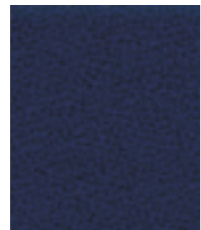
Rhino
JA022



Branch
JA508



Paderborn
JA047



Leipzig
JA046



Pascal
JA434



Biscay
JA059



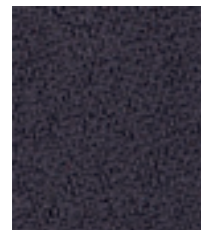
Vermillion
JA062



Poison
JA084



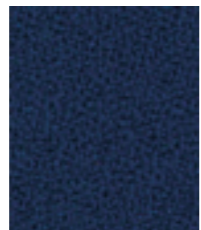
Heron
JA001



Raisin
JA061



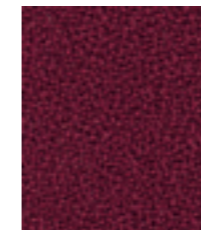
Mariner
JA016



Vico
JA435



Army
JA511



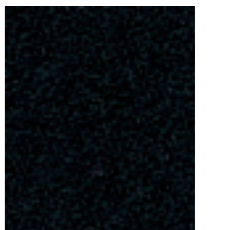
Aniseed
JA427



Swart
JA069



Spinoza
JA448



Pitch
JA002